



**үс**



**ам**



**хэл**



**шүд**



**нүд**



**чих**



**эрүү**



**нүүр**



**сэвх**



**буйл**



**уруул**

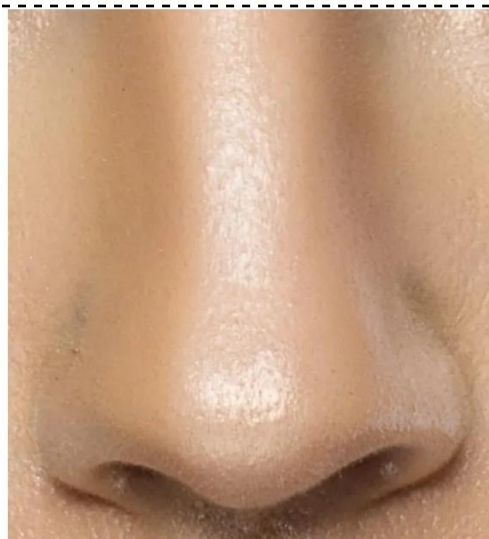


**хацар**





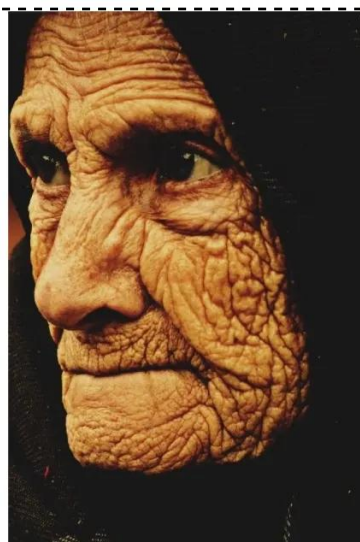
**духан**



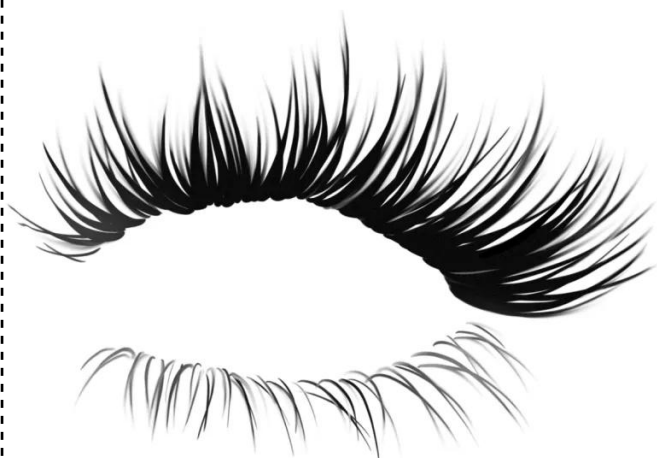
**хамар**



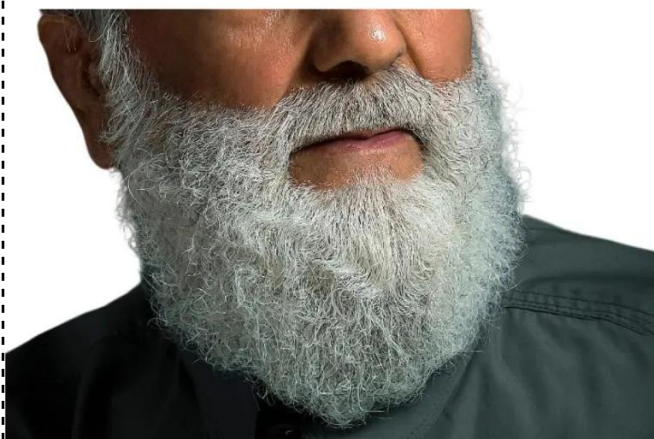
**хөмсөг**



**үрчлээ**



**сормуус**



**хууз сахал**



**хамрын нүх**



**жирвэгэр сахал**